

# ADVANCED CONTROL SYSTEMS

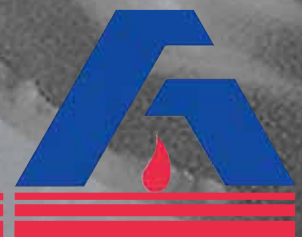
 508  
 698

*"From concept to completion ...  
a distinct difference in process controls"*

**ADVANCED CONTROL SYSTEMS**

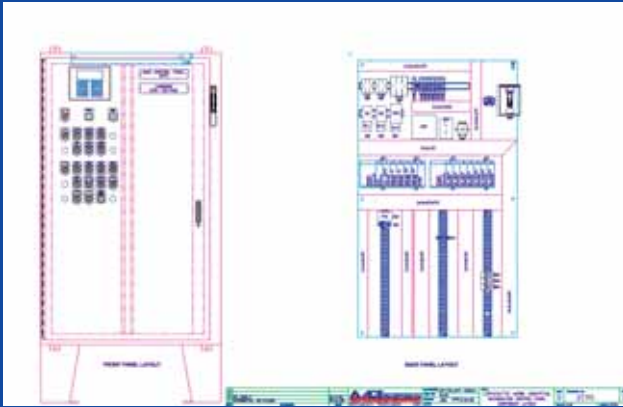
A Division of ACS, Inc.  
1999 Alpine Way Bellingham, WA 98226  
Phone: 360.676.6005 Fax: 360.647.9439

[www.acs-ac.com](http://www.acs-ac.com)



# PROCESS CONTROL SYSTEMS FOR ANY APPLICATION

- Telemetry Systems
- Waste Water Treatment Systems
- Water Treatment Systems
- Supervisory Control
- Man-Machine Interfaces
- Motion Control Systems
- Lighting Contactor Systems
- Pollution Control Systems
- Motor Control Centers
- Solid Waste Treatment
- Machine Tool Controls
- Variable Frequency Drives
- Programmable Logic Controllers



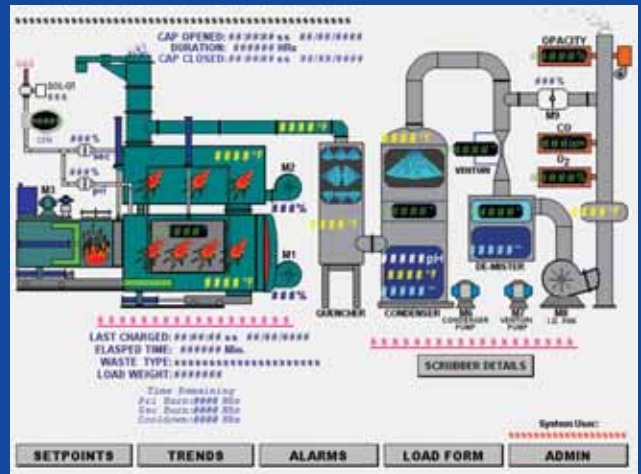
Combustion Control Panels



Continuous Emissions Monitoring Systems



Autoclave Control Systems

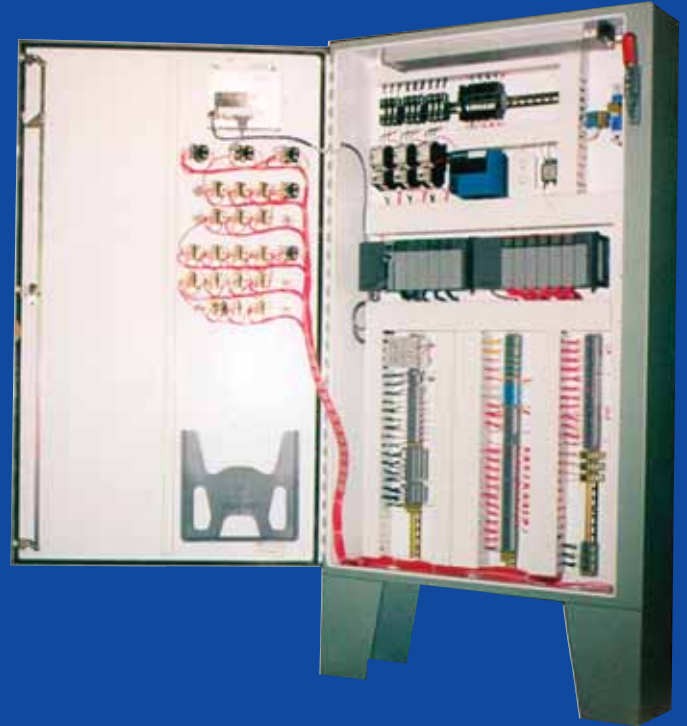


Data Acquisition Systems



Industrial Control Panels *NITW.E120409*  
Industrial Control Panels - CN *NITW7.E120409*  
Flame Control Panels *NIVT.E153060*  
Control Panels for use in Hazardous Locations *MNNY.E200998*  
Control Panels for use in Hazardous Locations - CN *MNNY7.E200998*  
ICPs Relating to Hazardous Locations *NRBX.E174896*  
ICPs Relating to Hazardous Locations - CN *NRBX7.E174896*

**ACS** has over 20 years of **system integration** and plc programming experience, with hundreds of systems installed and operating throughout the world.



Custom Enclosures

**ACS** Engineered Control Systems reflect expertise in combining modern process controls using today's latest available technology for maximum performance.

- Boiler Controls
- Dryer Controls
- Furnace Controls
- Incinerator Controls
- Autoclave Control Systems
- Continuous Emissions Monitoring
- Data Acquisition

## COMBUSTION CONTROL SYSTEMS



ACS would like the opportunity to help improve your plant's productivity and efficiency. This can be as simple as a few well executed control upgrades or as complex as a complete factory automation package.

The ACS Engineering Department can serve in an independent consulting capacity or work with you in achieving your objectives. Control systems across the country prove our ability to take projects from concept to full operation.

ACS's Engineering, Field, and Customer Service staff would like to extend you an invitation to contact us for all of your electrical control needs.



707

## ADVANCED CONTROL SYSTEMS

*A Division of ACS, Inc.*  
1999 Alpine Way Bellingham, WA 98226  
Phone: 360.676.6005 Fax: 360.647.9439

[www.acs-ac.com](http://www.acs-ac.com)

