

# ADVANCED COMBUSTION SYSTEMS

ENGINEERING  
MANUFACTURING  
INSTALLATION  
SERVICE

## PORTABLE CONTAINERIZED CONTINUOUS LOAD INCINERATORS

Advanced Combustion Systems' PC-Series Portable Containerized Incinerators are engineered and manufactured to provide a rugged and durable self-contained incineration system for harsh environments. Typical applications include remote sites, small villages, and marine vessels. RC-series Automatic Loaders provide safe, convenient incinerator loading, minimizing operator exposure to excessive heat and contaminated waste while providing increased throughput versus batch loaded systems of similar size. Each system is equipped with an externally accessible, recessed utility bulkhead configured for quick and easy connection of fuel supply and electrical service.



### FEATURES:

- Dual Chambers, Primary and Secondary
- Hydraulically actuated automatic feed system.
- Auxiliary container access door
- Heavy-duty all welded construction
- High strength, durable monolithic refractory lining
- Fully integrated PLC control system
- Simple and reliable operation
- Factory plumbed, wired, and tested prior to shipment.
- Designed and manufactured in the USA
- 5 YEAR "Total Component Warranty"

### OPTIONS:

- Marine Package - USCG, ABS, MARPOL MEPC.76(40) Approved Incinerator for Shipboard Application
- Fully modulated air supply and temperature control
- Hinged/Pivot stack
- Internal or External UL Listed Fuel Tank
- Generator Set
- Modular Transport Skid
- Liquid Waste Injection System

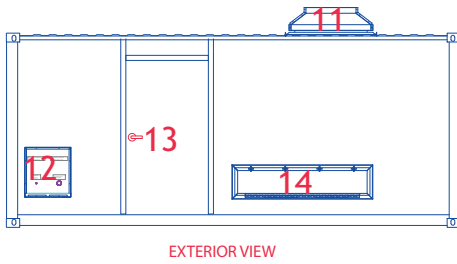


## ADVANCED COMBUSTION SYSTEMS

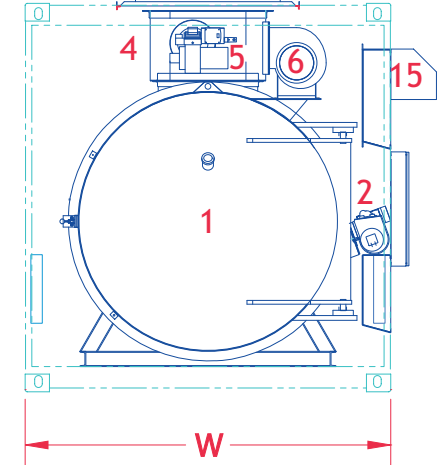
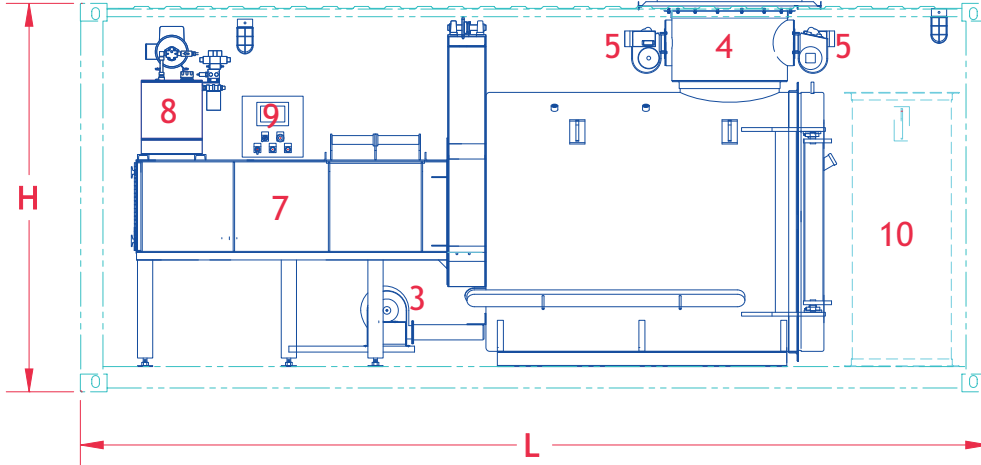
*A Division of ACS Inc.*

1999 ALPINE WAY, BELLINGHAM WA 98226  
PHONE: (360) 676-6005 • FAX: (360) 647-9439  
E-MAIL: [info@acs-accs.com](mailto:info@acs-accs.com)





1. PRIMARY CHAMBER
2. PRIMARY BURNER
3. PRIMARY BLOWER
4. SECONDARY CHAMBER
5. SECONDARY BURNER
6. SECONDARY BLOWER
7. FEEDRAM
8. HYDRAULIC POWER UNIT
9. CONTROL PANEL
10. STACK
11. STACK ROOF PENETRATION
12. UTILITIES BULKHEAD
13. CONTAINER ACCESS DOOR
14. AIR CHANNEL ACCESS



MODEL NUMBER	FEEDRAM MODEL	H		W		L		CHARGE HOPPER		BURN RATE <sup>‡</sup>		APPROX. WEIGHT <sup>†</sup>	
		FT	m	FT	m	FT	m	CU. FT.	m <sup>3</sup>	LBS./HR	kg/h	LBS.	kg
PC-150	RC6	8'-6"	2.59	8'-0"	2.43	20'-0"	6.10	14	1.20	180	82	17,300	7 870
PC-200	RC6	8'-6"	2.59	8'-0"	2.43	20'-0"	6.10	14	1.50	240	109	19,100	8 690
PC-300	RC6	8'-6"	2.59	8'-0"	2.43	20'-0"	6.10	14	2.30	360	163	21,400	9 730
PC-400	RC6	8'-6"	2.59	8'-0"	2.43	20'-0"	6.10	14	3.10	480	218	24,200	11 000
PC-500	RC6	8'-6"	2.59	8'-0"	2.43	20'-0"	6.10	135	3.8	600	272	27,000	12 280

\* - Dimensions can be modified to meet specific applications ‡ - Actual burning rate depends upon waste composition. † - Weight will vary depending on the options ordered.

### PC-SERIES INCINERATION SYSTEMS INCLUDE...

- 10 ft., 20 ft., and 40 ft. ISO Containers available
- Full Front and Optional Rear Access
- (M)CA-Series Incinerator
- Primary/Secondary Temperature Controls
- Bolt or Hinged Stack Sections
- Stack Roof Penetration Kit
- Stainless Steel Spark Screen/Rain Cap
- Combustion Air Damper
- Vapor Tight Light Fixtures & 120V Outlet
- Outdoor Plug-in Receptacle for Electrical Source
- Outdoor Fuel Train with Shut-Off
- High Temperature Flooring
- Primary Chamber Door Locking System (Optional)
- Load Ramp (Optional)
- Skid-Mounted Fuel Tank (Optional)
- Marine Package (Optional)

Larger systems and customizations available. Contact factory for details.

#### Services:

- Installation and start-up services
- Large parts inventory for immediate shipment
- Service and maintenance contracts for all makes
- Rebuilds and modifications to existing incinerators

Advanced Combustion Systems' Engineering and Testing Facilities are available for complete design and component selection. ACS can custom design and manufacture incineration and control systems to meet any specific application.

**ACS, Inc. is your sole source manufacturer for complete incineration systems including waste handling, heat recovery, emission controls and monitoring.**



782

**ACS INCORPORATED**  
 1999 ALPINE WAY BELLINGHAM, WA 98226  
 PHONE: 360.676.6005 FAX: 360.647.9439  
 TOLL FREE: 800.445.0243  
 WWW.ACS-ACS.COM



# ADVANCED COMBUSTION SYSTEMS

ENGINEERING  
MANUFACTURING  
INSTALLATION  
SERVICE

## PORTABLE CONTAINERIZED INCINERATORS

Advanced Combustion Systems' PC-Series Portable Containerized Incinerators are engineered and manufactured to provide a rugged and durable self-contained incineration system for harsh environments. Typical applications include remote sites, small villages, and marine



vessels. Optional Marine package provides *USCG and ABS approved incinerator for shipboard applications. The Marine Series Incinerators meet MARPOL MEPC.76(40) requirements as well as EPA and EU emission regulations.* Each system is equipped with an externally accessible, recessed utility bulkhead configured for quick and easy connection of fuel supply and electrical service.

### FEATURES:

- Dual Chambers, Primary and Secondary
- Heavy-duty all welded construction
- High strength, durable monolithic castable refractory lining
- Fully integrated PLC control system
- Simple and reliable operation
- Modular design for easy installation
- Factory plumbed, wired, and tested prior to shipment.
- Designed and manufactured in the USA
- 5 YEAR "Total Component Warranty"

### OPTIONS:

- Marine Package - USCG, ABS, MARPOL MEPC.76(40) Approved Incinerator for Shipboard Application
- Fully modulated air supply and temperature control
- Hinged/Pivot stack
- Internal or External UL Listed Fuel Tank
- Generator Set
- Modular Transport Skid
- Liquid/Waste Oil System



## ADVANCED COMBUSTION SYSTEMS

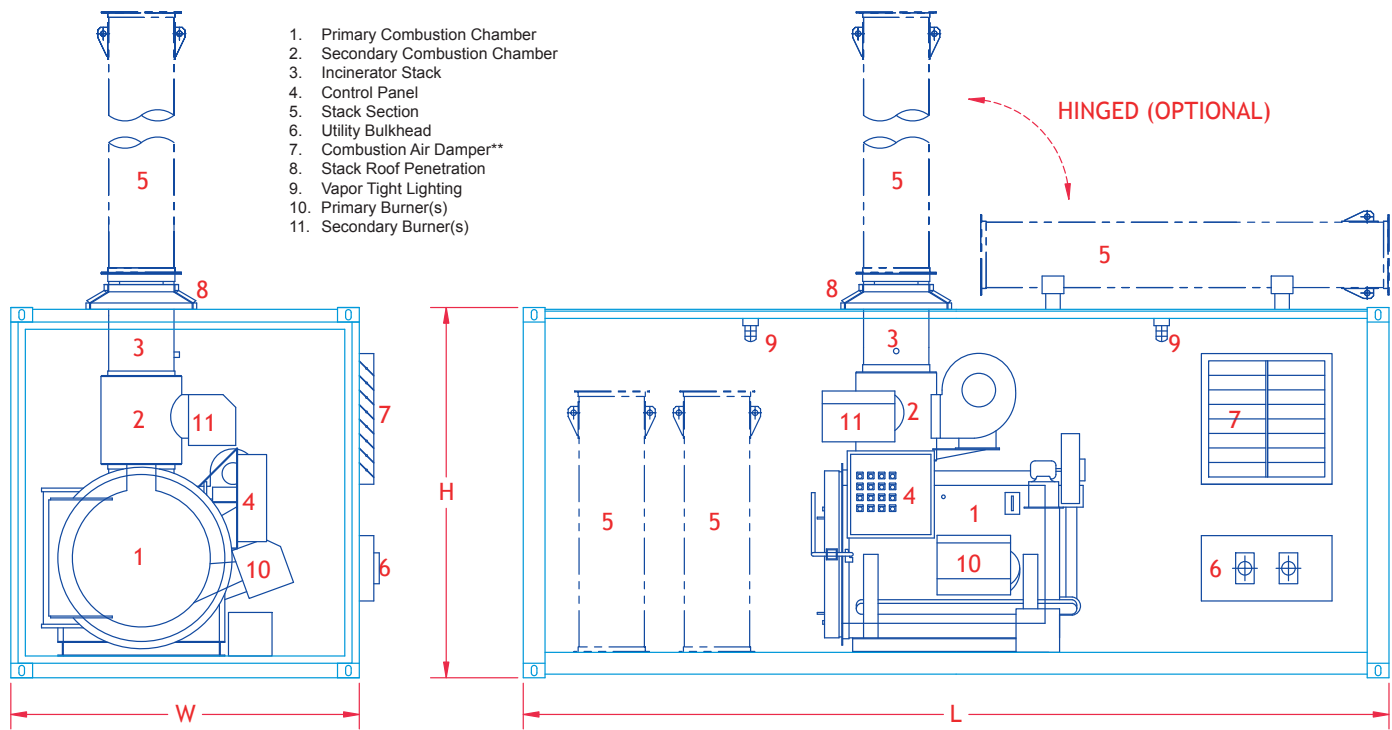
*A Division of ACS Inc.*

1999 ALPINE WAY, BELLINGHAM WA 98226

PHONE: (360) 676-6005 • FAX: (360) 647-9439

E-MAIL: [info@acs-accs.com](mailto:info@acs-accs.com)





1. Primary Combustion Chamber
2. Secondary Combustion Chamber
3. Incinerator Stack
4. Control Panel
5. Stack Section
6. Utility Bulkhead
7. Combustion Air Damper\*\*
8. Stack Roof Penetration
9. Vapor Tight Lighting
10. Primary Burner(s)
11. Secondary Burner(s)

MODEL NUMBER	H		W		L		MAXIMUM CHARGE		BURN RATE <sup>‡</sup>		APPROX. WEIGHT <sup>†</sup>	
	FT	m	FT	m	FT	m	CU. FT.	m <sup>3</sup>	LBS./HR	kg/h	LBS.	kg
PC-50	8'-6"	2.59	8'-0"	2.43	20'-0"	6.10	14	0.40	65	30	8,200	3 720
PC-100	8'-6"	2.59	8'-0"	2.43	20'-0"	6.10	27	0.80	125	57	9,500	4 310
PC-150	8'-6"	2.59	8'-0"	2.43	20'-0"	6.10	41	1.20	175	79	11,600	5 260
PC-200	8'-6"	2.59	8'-0"	2.43	20'-0"	6.10	54	1.50	250	113	13,000	5 900
PC-300	8'-6"	2.59	8'-0"	2.43	20'-0"	6.10	81	2.30	375	170	19,000	8 620
PC-400	8'-6"	2.59	8'-0"	2.43	20'-0"	6.10	108	3.10	500	227	22,800	10 340
PC-500	8'-6"	2.59	8'-0"	2.43	20'-0"	6.10	135	3.8	600	272	25,700	11 660

\* - Dimensions can be modified to meet specific applications \*\* Air Damper required on non-dual access container systems  
<sup>‡</sup> - Actual burning rate depends upon waste composition. <sup>†</sup> - Weight will vary depending on the options ordered.

### PC-SERIES INCINERATION SYSTEMS INCLUDE...

- 10 ft., 20 ft., and 40 ft. ISO Containers available
- Full Front and Optional Rear Access
- (M)CA-Series Incinerator
- Primary/Secondary Temperature Controls
- Bolt or Hinged Stack Sections
- Stack Roof Penetration Kit
- Stainless Steel Spark Screen/Rain Cap
- Combustion Air Damper
- Vapor Tight Light Fixtures & 120V Outlet
- Outdoor Plug-in Receptacle for Electrical Source
- Outdoor Fuel Train with Shut-Off
- High Temperature Flooring
- Primary Chamber Door Locking System (Optional)
- Load Ramp (Optional)
- Skid-Mounted Fuel Tank (Optional)
- Marine Package (Optional)

*Larger systems and customizations available. Contact factory for details.*

#### Services:

- Installation and start-up services
- Large parts inventory for immediate shipment
- Service and maintenance contracts for all makes
- Rebuilds and modifications to existing incinerators

Advanced Combustion Systems' Engineering and Testing Facilities are available for complete design and component selection. ACS can custom design and manufacture incineration and control systems to meet any specific application.

**ACS, Inc. is your sole source manufacturer for complete incineration systems including waste handling, heat recovery, emission controls and monitoring.**



712

**ACS INCORPORATED**  
 1999 ALPINE WAY BELLINGHAM, WA 98226  
 PHONE: 360.676.6005 FAX: 360.647.9439  
 TOLL FREE: 800.445.0243  
 WWW.ACS-ACS.COM



# PORTABLE CONTAINERIZED INCINERATORS



PC-100 INTERIOR



PC SERIES EXTERIOR - OPTIONAL SKID



PC-400 INTERIOR



UTILITY BULKHEAD & AIR LOUVER  
(LOUVER SHIPPING COVER INSTALLED)

## ADVANCED COMBUSTION SYSTEMS

*A Division of ACS Inc.*

1999 ALPINE WAY, BELLINGHAM WA 98226

PHONE: (360) 676-6005 • FAX: (360) 647-9439

E-MAIL: [info@acs-accs.com](mailto:info@acs-accs.com)



# PORTABLE CONTAINERIZED INCINERATORS



PC SERIES INTERIOR  
CONTROL PANEL & AIR LOUVER



UTILITY BULKHEAD - QUICK DISCONNECT ELECTRICAL  
& FUEL OIL CONNECTIONS WITH EXTERNAL E-STOP



PC-400 EXTERIOR  
AIR MANIFOLD ACCESS & UTILITY BULKHEAD



PC0400  
LIQUID/WASTE OIL SYSTEM

**ADVANCED COMBUSTION SYSTEMS**

*A Division of ACS Inc.*

1999 ALPINE WAY, BELLINGHAM WA 98226

PHONE: (360) 676-6005 • FAX: (360) 647-9439

E-MAIL: [info@acs-accs.com](mailto:info@acs-accs.com)

712S  
20090701

